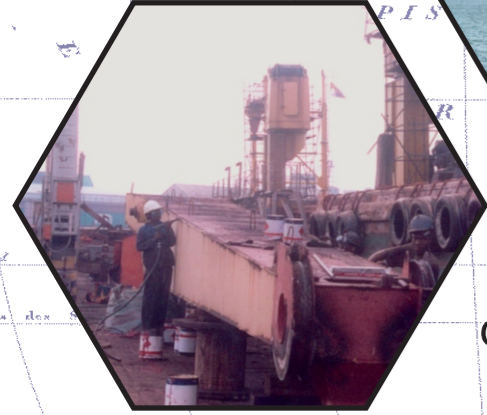


Macc Engineering has been operating in South Africa for over 40 years



Offering you a complete package of facilities for all types of maritime repairs - mechanical, plating, piping, valves, fuel injection, blasting & painting and all the other services required, either afloat or in dry dock.



Our experienced service team is ready to assist with what ever may be required.



Our workshops are fully equipped to perform overhauls and general repairs, required by any type of vessel to clients standards and satisfaction and as per class requirements.



Riding Crew for tank cleaning & hatch cleaning.
Riding crew available for main engine & generator repairs.



MACC ENGINEERING & CONSTRUCTION

SHIP REPAIRS • PIPE WORKS • WELDING & BOILER MAKING • MILLS & FACTORY MAINTENANCE



Latitude: 29° 52'S
Longitude: 31° 04'E
Time Zone: GMT +2

Repairs	Berth	Length	Draft
Ship Repair Jetty West		300m	7.8m
Ship Repair Jetty East		300m	7m

DURBAN DRY DOCK PRINCE EDWARD
Transnet Port Authorities operates a Dry Dock
The Transnet Dry Dock can be divided into 2 compartments of 206.9m and 138.7m respectively and can be emptied within 4hours. There are 5 electric cranes ranging from 10 to 50 tons SWL to service the vessels in dock. The Floating Dock has a lifting capacity of 45000 tons and has two 5 ton electric cranes.

The dry Dock facility is Owned and managed by Transnet National Port Authority and used by the private sector on a first come first serve basis.
Ship repairs are undertaken in the East London Graving Dock which has a docking length of 200 meters. In cases of emergency, a docking length of 210 meters can be obtained by placing the caisson in the emergency stop at the entrance.
Private contractors undertake repair and maintenance.
A repair quay of 106 meters is available adjacent to the dry-dock.

Facilities include:
Floodlighting of 24-hour working, compressed air shore power, fresh and salt water, telephone lines, ablution facilities.

The dock is equipped with:

- 2 X 15ton electric cranes
- 1 X 5ton electric crane
- 1 X 4ton electric crane

DIMENSIONS:

Overall Docking Length (210m in emergency cases)	200,0m
Length on Keel Blocks	193,1m
Length on Bottom	198,5m
Width at Coping	31,2m
Width at Entrance Top	27,2m
Maximum Width at Bottom	22,9m
Depth over Entrance Sill at MHWS	10,2m
Depth over Inner Sill at MHWS	10,2m

@ info@maccsa.co.za
eugene@maccsa.co.za
www.maccsa.co.za

+27 31 306 2284
+27 31 301 9461 (Fax)
+27 82 973 3020 (Mobile)

PO Box 29210
Maydon Wharf, 4057
Durban, South Africa



COMPLETE SHIP CARE IN SOUTH AFRICA

Macc Engineering and Construction started concentrating on Ship Repairs in 1976 with some pipe, plate and mechanical work.

Today Ship Repairs is the base of business of Macc Engineering & Construction while still doing maintenance work but in smaller scale.

Macc Engineering & Construction does all types of Ship Repairs - pipe, steel plating and mechanical work such as diesel engines, pump and valve repair, turbo chargers and other equipment are in house services.

Our reliable and efficient sub-contractors are used for jobs such as electrical, hydraulic, etc. All of our welding procedures, welding staff and consumables are accredited by ABS, Lloyds and BV.

While the majority of our work is what we call "Voyage Repairs" we also do any type of dry dock work no matter how big, in the Ports of Durban and East London.

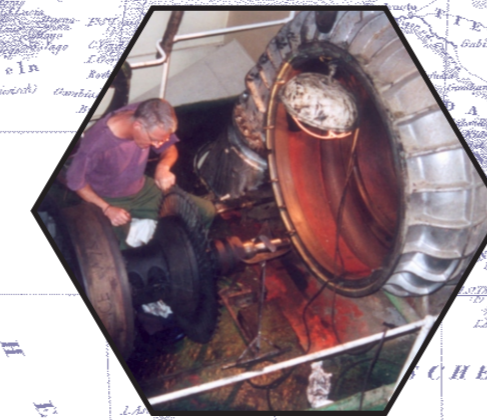
We have worked in every port in South Africa from Cape Town to Maputo and even in Mombasa - Kenya. We have a satellite branch in Maputo and operate under the Name "AMALGAMATED MARINE and SERVICES".

Macc Engineering & Construction does repairs to all types of vessels such as fishing boats, general cargo and containers ships, dredgers, tugs, etc.



Full Marine and Engineering Services while afloat and in dry dock.

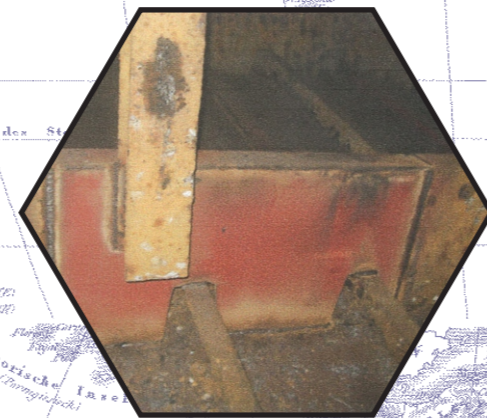
○ Turbo Charger Overhaul



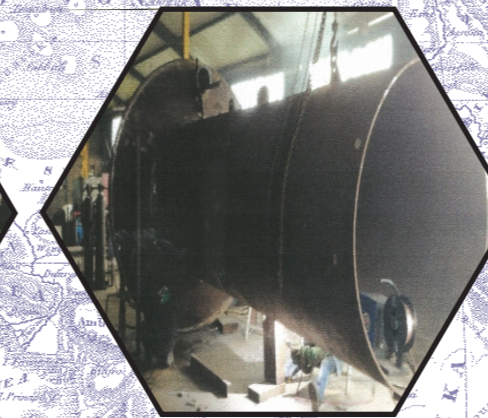
○ Aux and Main Engine Repairs



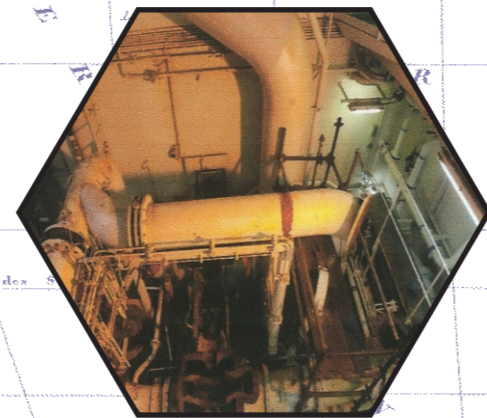
○ Steel work



○ Pipe repair and renewals



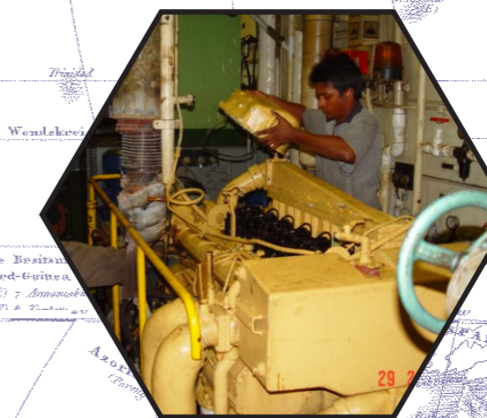
○ Pump and valve repairs



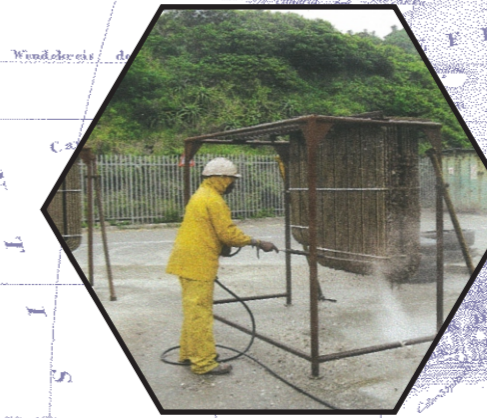
○ Tail Shaft



○ Fuel injection services



○ Blasting and painting



○ Electrical hydraulic aircon services

○ Tank & Hatch Cleaning